



Triangle Regional Transit Program
our transit future



Important Questions

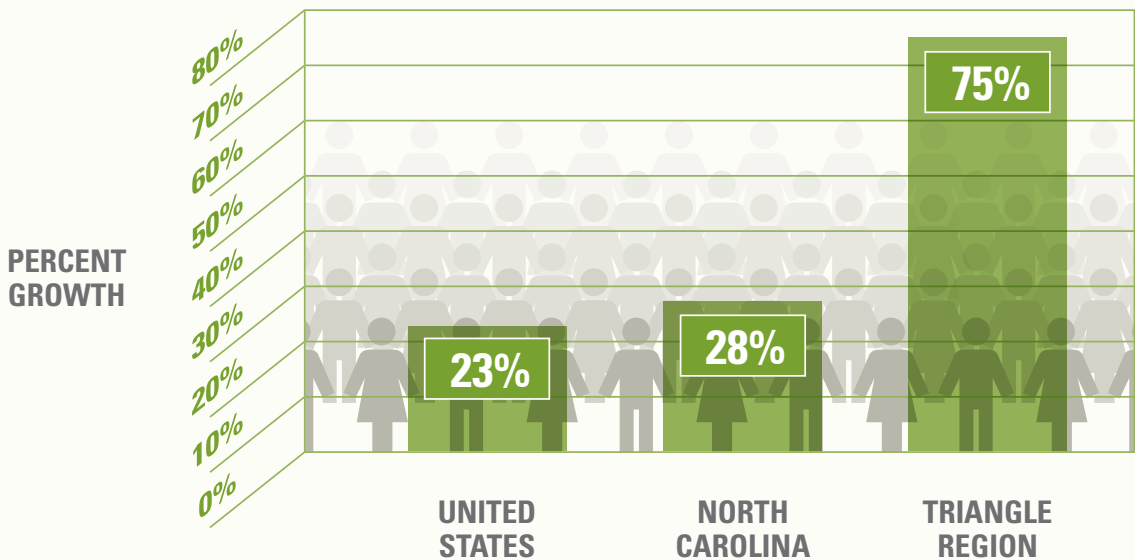


Triangle Regional Transit Program

How fast is the Triangle Region growing?

- The Region is expected to add more than 1 million people by 2035, taking us from 1.5 million to 2.8 million.
- By 2020, Wake County is projected to be NC's largest county.

PROJECTED POPULATION GROWTH: 2005-2035

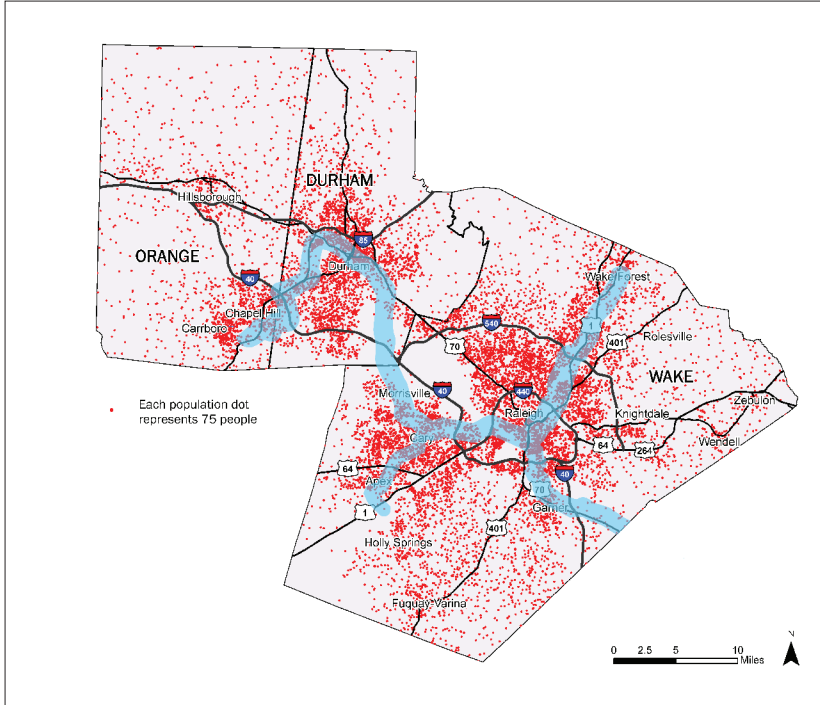


Where is the Triangle Region growing?



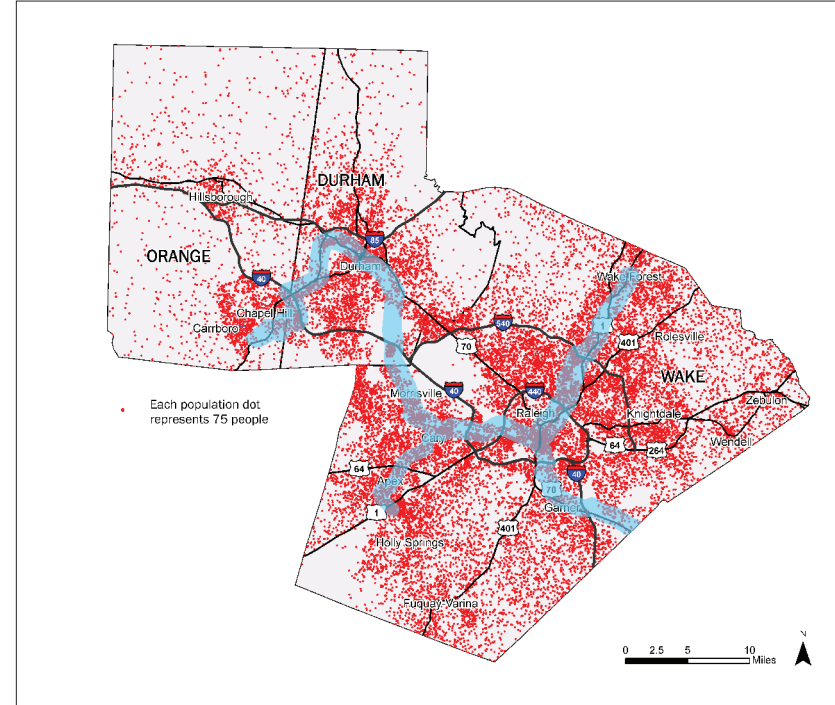
Triangle Regional Transit Program

2005 POPULATION



Alternatives Analysis Study Corridor

2035 POPULATION





Triangle Regional Transit Program

Why does the Triangle need better transit?

- *To develop transportation choices that:*

- + Enhance mobility
- + Reduce growth of traffic on our increasingly congested roadway network
- + Improve regional connectivity

- *To maintain a high quality of life for our rapidly expanding population*

- *To increase economic competitiveness:*

- + Promote job growth and creation
- + Attract new businesses
- + Provide better access to businesses and commercial centers

- *To improve overall air quality*

