



Triangle Regional Transit Program
our transit future



Alternatives Analysis Process & Schedule



Triangle Regional Transit Program

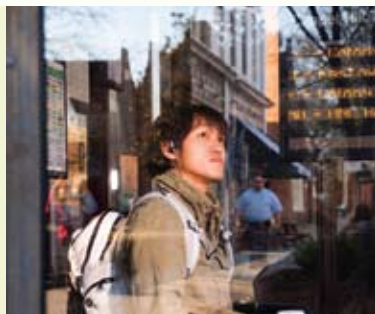
What is an Alternatives Analysis?

- *Examines all reasonable transportation alternatives within the selected corridors*
- *Conducts a fair and impartial evaluation*
- *Follows Federal guidelines*
- *Recommends a locally preferred alternative (LPA)*

+ Alignment

+ Vehicle Technology

+ Station Locations





Triangle Regional Transit Program

What will be studied?



- ***A No-Build Alternative (Status Quo)***

- + Assumes no changes from the current system
- + Adheres to Federal requirements
- + Used to compare against other alternatives



- ***A “Non-Guideway” Alternative or Transportation System Management (TSM) Alternative***

- + The best that can be done without building new transit infrastructure
- + Can include High Occupancy Vehicle (HOV) lanes, ramp metering, improved bus service, express toll lanes



- ***Fixed Guideway Alternatives***

- + Transit that is on a “fixed” route that will not change (as opposed to conventional bus routes)

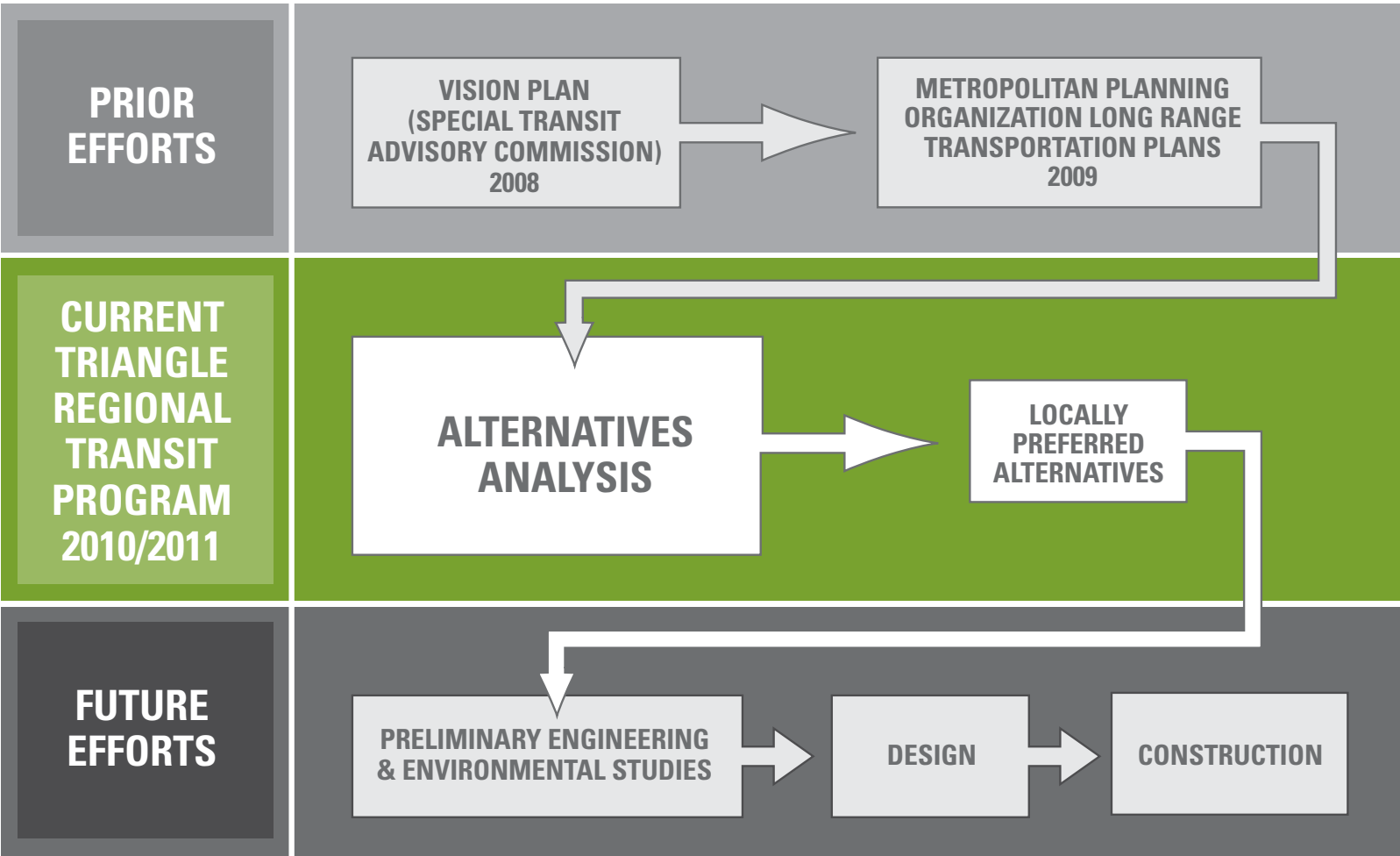
- *Light Rail (on new tracks)*
- *Commuter Rail (on existing freight tracks)*
- *Bus Rapid Transit (in separate, dedicated lanes)*



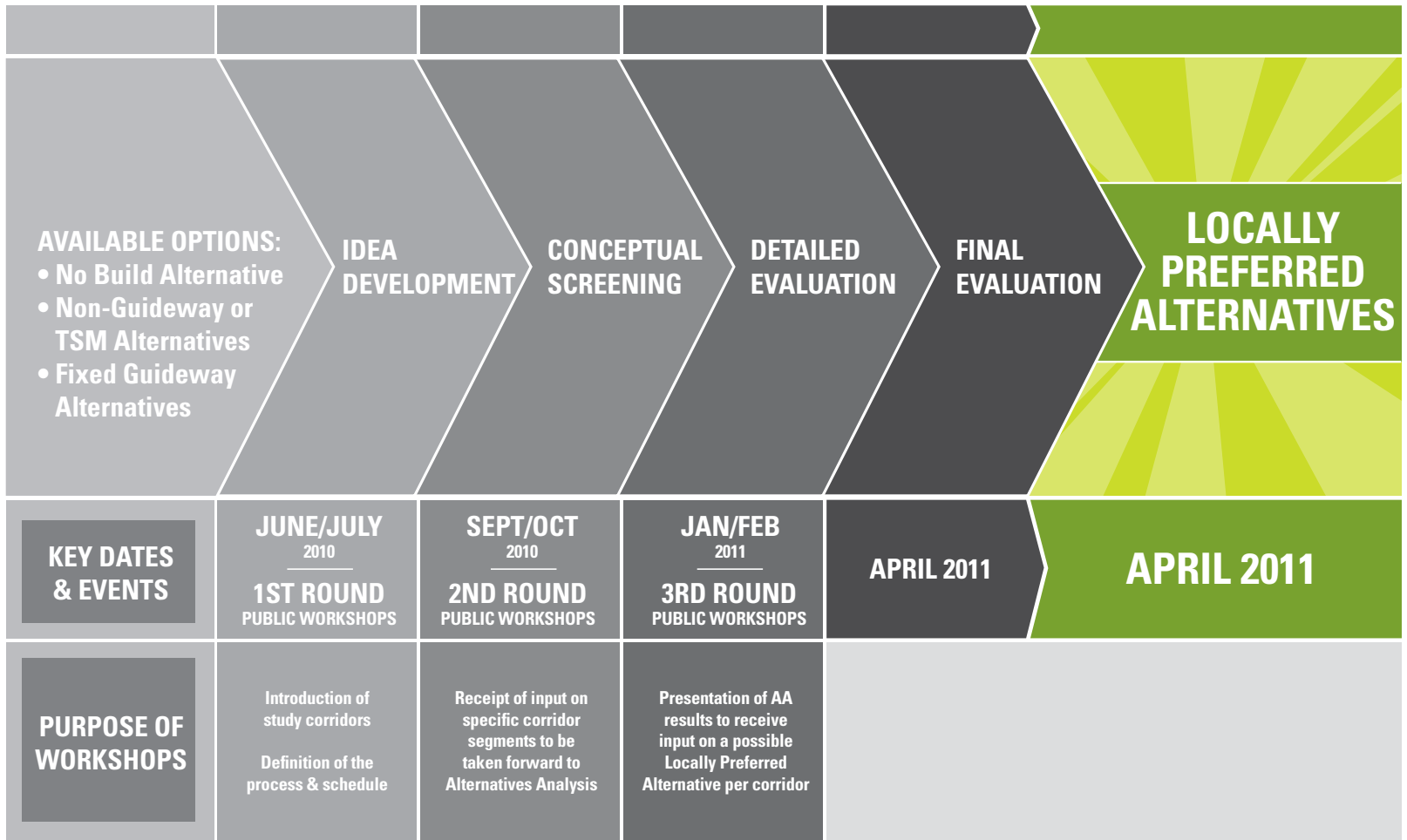
Project Development Process



Triangle Regional Transit Program



Alternatives Analysis Process



Triangle Regional Transit Program